

Ellensburg Central Transit Transit Development Plan

Annual Report for 2019
and
Six-Year Plan for 2020 – 2025



The Transit Development Plan for 2020-2025 and the 2019 Annual Report provide updated information to the Washington State Department of Transportation (WSDOT) on Ellensburg Central Transit's 2019 transit system accomplishments and proposed strategies for 2020 to 2025.

This document is submitted per the requirements of RCW § 35.58.2795.

Ellensburg Central Transit is required to prepare a six-year transit development plan and annual report on a yearly basis. WSDOT uses this document to prepare an annual report for the Washington State Legislature summarizing the status of public transportation systems statewide. This document is also used as the annual report by the Public Transit Advisory Committee (PTAC) to the Ellensburg City Council and to notify the public about projects that have been completed, are in process, or are planned for the future. Following a public hearing, the Ellensburg City Council must approve this document prior to acceptance by WSDOT.

For calendar year 2019, Ellensburg Central Transit Fixed Route and Paratransit service within the city limits of the City of Ellensburg was contracted by the City to HopeSource, a local non-profit community action organization. HopeSource received funding for the operations of Ellensburg Central Transit.

Table of Contents

Section 1: ORGANIZATION	4
Exhibit A: Transit Service Area Map	5
Section 2: FACILITIES AND EQUIPMENT	7
Exhibit B: Vehicle List	7
Section 3: TRANSPORTATION SERVICE	8
Section 4: 2019 ACCOMPLISHMENTS	13
Section 5: STATISTICS AND PROJECTIONS	14
Exhibit C: Service Data by Mode	14
Section 6: OPERATING FINANCIAL PLAN	15
Section 7: TRANSIT FINANCES	17
Exhibit D: 2019 Revenues and Expenses	17
Exhibit E: 2020 – 2025 Projected Revenues and Expenses	20
Section 8: SIX-YEAR TRANSIT IMPROVEMENT PLANS	21
Section 9: SUMMARY	24
Exhibit F: Current System Maps	25
Exhibit G: Transit Development Plan adopted by the City of Ellensburg and attested to by City Clerk ..	31

Section 1: ORGANIZATION

History

In 2011, the City of Ellensburg, the Associated Students of Central Washington University, HopeSource, and the Washington State Department of Transportation collaborated to plan, fund, and operate public transit services within Ellensburg.

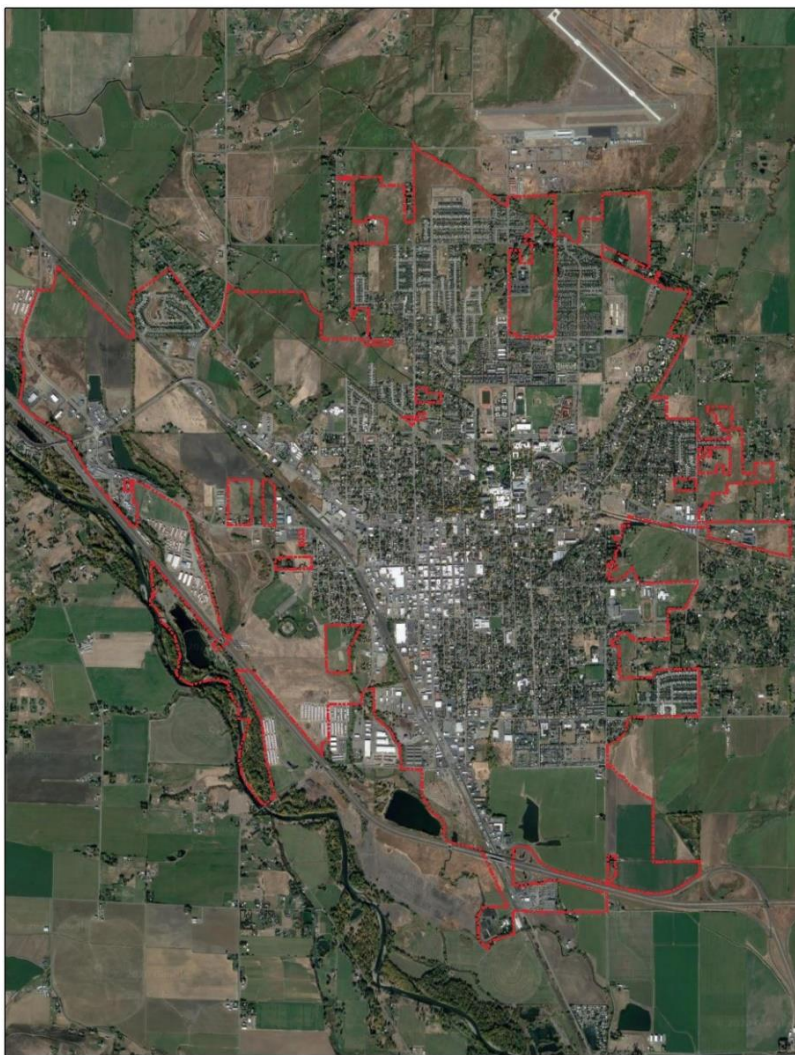
In 2016, the City Council authorized a special election to be held on April 26, 2016 for a sales and use tax. The tax was to be levied in an amount of up to two-tenths of one percent for a period of not more than ten years to pay for or financing public transportation improvements. Ellensburg voters approved the levy with a 63% majority and the City assumed operation of Central Transit on July 1, 2017.

Central Transit began with Fixed-route and complimentary ADA Paratransit services and expanded to include a non-emergency medical Cabulance service. It also provides support for a county wide Dial A Ride service, the Kittitas County Connector as well the Yakima-Ellensburg Commuter.

Service Area

Central Transit is a rural transit system serving a population of 22,640 people within a total area of 7.65 square miles. Ellensburg is located just east of the Cascade Range at the junction of Interstate 90 and 82. The city is located along the Yakima River in the Kittitas Valley and is known as the most centrally located city in the state.

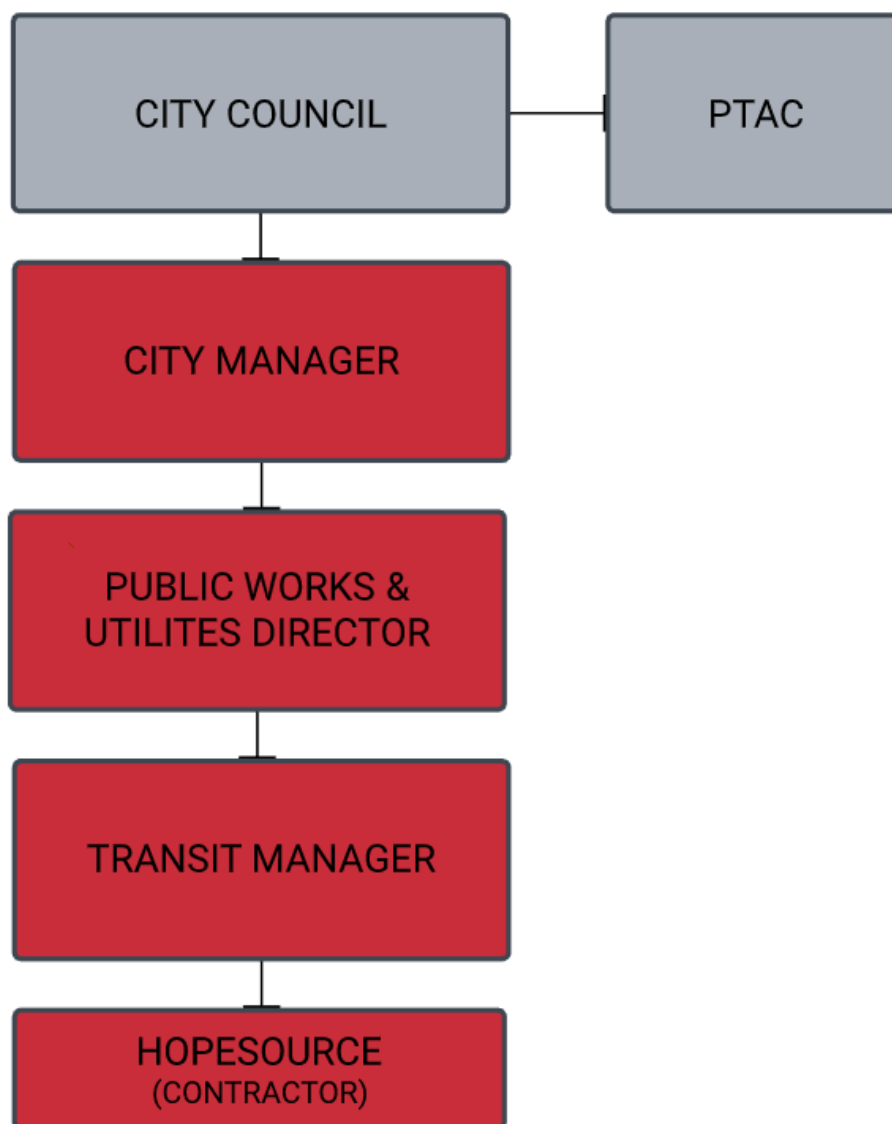
Exhibit A: Transit Service Area Map



Organizational Structure

The Ellensburg City Council is responsible for Central Transit's operations. The Public Transit Advisory Committee (PTAC) provides direction, recommendations on system improvements, education and funding. The City Manager and Public Works Director report to the City Council on Transit activities, policies and finances. The Transit Manager oversees the daily operational activities of the Transit System, which is overseen by the Public Works Director and City Manager. The City of Ellensburg contracts the Fixed-route, Paratransit services and Cabulance to HopeSource.

ELLENSBURG CENTRAL TRANSIT ORGANIZATIONAL CHART



Section 2: FACILITIES AND EQUIPMENT

Ellensburg Central Transit does not have bus maintenance or operations facilities. The service provider, HopeSource has operations and bus storage located at 700 E. Mountain View, Suite 501, Ellensburg, Washington 98926.

Central Transit's Administrative offices are located at 501 N Anderson St, Ellensburg, Washington 98926.

All operational equipment is owned and maintained by HopeSource.

Exhibit B: Vehicle List

SERVICE	#	TYPE	YR	MAKE	MODEL	TRIM	VIN NUMBER	SEATS
PARATRANSIT DIAL A RIDE	101	BUS	2018	FORD	E350/ALL STAR	OTHER	1FDEE3F64JDC41666	14
PARATRANSIT DIAL A RIDE	95	BUS	2018	FORD	E450	ECONOLINE	1FDFE4FS8HDC77992	14
PARATRANSIT DIAL A RIDE	96	BUS	2018	FORD	E450	SENATOR 11	1FDFE4FS5HDC77951	14
PARATRANSIT DIAL A RIDE	99	BUS	2018	FORD	E450	SENATOR 11	1FDFE4FS2HDC77955	14
PARATRANSIT DIAL A RIDE	89	BUS	2014	FORD	E450	SUPER DUTY	1FDEE4FL8EDB10211	14
PARATRANSIT DIAL A RIDE	97	BUS	2017	FORD	E450	ECONOLINE	1FDFE4FS2HDC77941	14
FIXED ROUTE	3	BUS	2015	FORD	E450	SUPER DUTY	1FDEE4FL5FDA34903	14
FIXED ROUTE	4	BUS	2015	FORD	E450	ECONOLINE	1FDEE4FL7FDA34904	14
FIXED ROUTE	5	BUS	2017	FORD	E450	ECONOLINE	1FDFE4FS2HDC49329	14
FIXED ROUTE	6	BUS	2017	FORD	E450	ECONOLINE	1FDFE4FS6HDC49348	14
FIXED ROUTE	7	BUS	2017	FORD	E450	ECONOLINE	1FDFE4FSXHDC49336	14
FIXED ROUTE	8	BUS	2019	FORD	E350	STARCRAFT ALLSTAR	1FDEE3FS2KDC21561	14
FIXED ROUTE	93	BUS	2012	FORD	E450	ECONOLINE	1FDFE4FS8CDA21814	14
CABULANCE	100	VAN	2016	DODGE	CARAVAN	BRAUN ABILITY	2C7WDGBG1GR372421	2
KITTITAS COUNTY CONNECTOR	200	BUS	2019	FORD	E350	STARCRAFT ALLSTAR	1FDES8PMXKKB87628	10

KITTITAS COUNTY CONNECTOR	201	BUS	2019	FORD	E350	STARCRAFT ALLSTAR	1FDES8PMXKKB87631	10
---------------------------------	-----	-----	------	------	------	----------------------	-------------------	----

Section 3: TRANSPORTATION SERVICE

Central transit services consist of a Fixed-route service with 5 routes, complimentary ADA Paratransit service and a non-emergent Cabulance service. The City also supports a demand response county Dial A Ride service, the Kittitas County Connector as well as the Yakima-Ellensburg Commuter.

Central Transit provides connections to many other transportation services supporting the state's Connecting Washington program.



Fixed Route

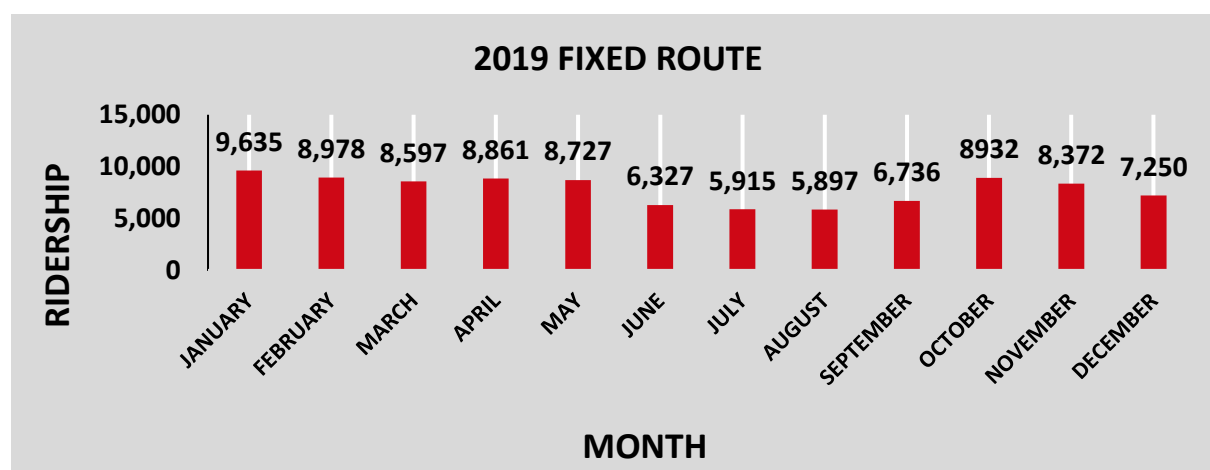
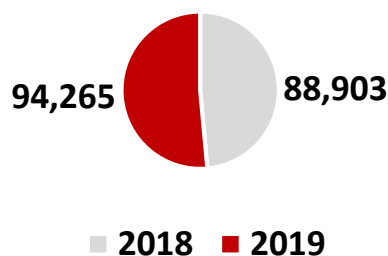
Central Transit's Fixed Route bus service is an accessible fare free public transit service which operates 7 days a week within the City of Ellensburg. Service hours are between 7:00 AM – 8:00 PM. Transit services operate year-round with the exception of the following holidays: New Year's Day, President's Day, Memorial Day, 4th of July, Thanksgiving Day and Christmas Day.

New routes were implemented in September 2019. The enhanced fixed route service is now provided through five routes.

- Routes 12 A /12 B operate from 7:00 AM to 8:00 PM and serve the north end of the City, CWU, downtown, and the business/shopping areas on the south end of town.
- Route 13 operates from 7:00 AM to 7:00 PM and extends north to Elmview and south to senior housing and the hospital.
- Route 14 operates from 7:00 AM to 7:00 PM and serves additional north end housing and EHS on the south end.
- Routes 15 & 16 operate from 7:00 AM to 7:00 PM and serve downtown and east Ellensburg.

The Fixed Route service provides safe reliable transportation with the goal to increase accessibility, connectivity, ridership and passenger amenities. The service is essential to the community as it reduces traffic congestion, pollution, parking shortages and helps stimulate the economy by connecting passengers to local businesses, essential services, employment opportunities as well as connections to other statewide transportation systems.

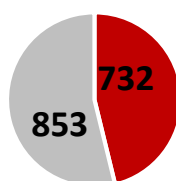
Fixed Route ridership increased 6% from the previous year.



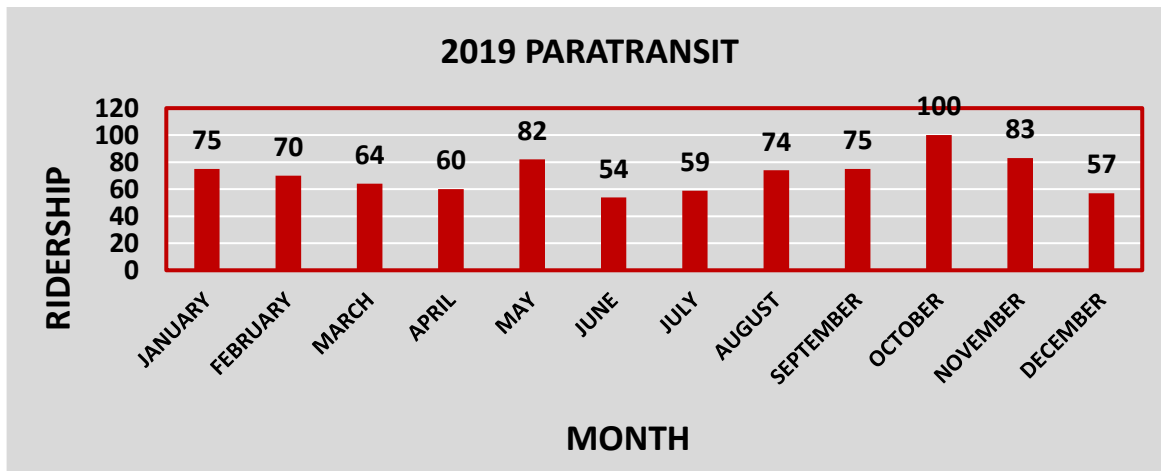
Paratransit

ADA Paratransit services are available during the same operating hours as the Fixed Route service to residents of Ellensburg who qualify for the service under the provisions of the Americans with Disabilities Act. This complementary shared ride service operates within $\frac{3}{4}$ miles of the Fixed Route service which includes many diverse populations such as low income, elderly, students and skilled/assisted living facilities. The service provides door to door service with a 30-minute arrival window.

Paratransit ridership increased 16% from the previous year.



■ 2018 ■ 2019



Cabulance

Cabulance service was one of the first improvements made to the transit system. The service provides accessible non-emergency medical transportation for individuals within the City of Ellensburg to and from specific medical facilities as initiated by Kittitas Valley Fire and Rescue EMTs. The goals of the Cabulance program include:

- Providing cost effective transportation to individuals who need non-emergency care.
- Reducing inappropriate use of emergency services.

In 2019 there were 118 Cabulance trips which allowed emergency vehicles to assist individuals with life threatening emergencies.

Dial A Ride

Ellensburg Central Transit helps support HopeSource's Dial A Ride service which provides demand response transportation services county wide. The service operates Monday – Friday 8:00 AM to 5:00 PM unless closed for a holiday. Riders must qualify to use the service.

In 2019 there were 11,043 one-way trips on Dial A Ride.

Kittitas County Connector

The Kittitas County Connector is a free bus service between Ellensburg and Upper County operated by HopeSource. The service operates 7 days a week except for holidays.

In 2019 there were 1,748 boarding's on the Kittitas County Connector.

Multimodal Connections

Central Transit provides several connections to the Yakima-Ellensburg Commuter which provides bus service between Ellensburg and Yakima Monday through Friday.

All Central Transit routes connect daily to the Kittitas County Connector which travels eastbound to the upper county.

Central Transit connects to Greyhound, Travel Washington's Apple Line at Love's Truck Stop near the west 1-90 interchange for travel between Ellensburg and Wenatchee.

Central Transit also provides connections with Bellair Airporter Shuttle services to Sea-Tac Airport at Love's Travel Stop near the west 1-90 interchange and the CWU Starbucks on E 10th Ave.

The City of Ellensburg is committed to multimodal improvements within the City and to enhance the quality of life of its residents by providing ways to help provide better access mobility, improve options and independence, as well as protect the environment. These include improving sidewalks and curb ramps to ADA standards, new sidewalks, bike lanes as well as pedestrian, bike and equestrian trails.

Fare Structure

All Ellensburg Central Transit services are fare free

Section 4: 2019 ACCOMPLISHMENTS

- The Central Transit bus system received a complete overhaul to its routes and schedules to enhance and better serve the residents of Ellensburg. The old loops were exchanged for a more linear system with 34 stops added. Consideration for the stops came directly from surveys and community input. Many of the routes will improve access for students, commuters and modified service areas to support new ridership.
- Created Routes and schedules in both English and Spanish.
- The new routes launched September 16th, 2019.
- The City partnered with HopeSource in the establishment of a commuter bus service between Ellensburg and Upper Kittitas County called the Kittitas County Connector. This service is in line with and supports the states Connecting Washington program.
- Central Transit offered rodeo and fair fans free bus service during the Labor Day weekend.
- One new bus was added to the existing fixed route fleet as well as additional operators.
- Fixed Route boarding's increased 6% from 2018.
- Paratransit trips increased 16% from 2018.
- The City Council approved an MOU between the City and Prestige Hearthstone to allow their medical staff to request Cabulance rides directly. This will allow Kittitas Valley Fire and Rescue to respond to real emergency calls.
- The City constructed a ½ mile of pedestrian, bike and equestrian trail constructed from 14th Ave. to 18th Ave.
- Constructed 1,200 feet of new bike lane on Main Street was constructed.
- Constructed 1,600 feet of new sidewalk on Main Street.
- Improved 18 existing curb ramps to ADA standards.
- Traffic signal upgrades with accessible pedestrian signal heads, pushbuttons and audible callouts.
- Pedestrian safety measures including leading pedestrian interval timing and flashing left yellow turn arrows.
- The Ellensburg City Council approved bus stop art! Artwork from local artists will be featured on 10 City bus shelters. 5 in 2019 and 5 in 2020.

Section 5: STATISTICS AND PROJECTIONS

2019 Central Transit Actual System Statistics with 2020 – 2025 Projections

Exhibit C: Service Data by Mode

FIXED ROUTE	2019 ACTUAL	2020	2021	2022	2023	2024	2025
Boarding's	94,265	68,000	110,000	115,000	120,000	125,000	130,000
Operating Expenses	718,019	1,023,695	1,044,169	1,065,052	1,086,352	1,108,079	1,130,241
Vehicle Service Miles	197,233	240,000	240,000	240,000	240,000	240,000	240,000
Vehicle Service Hours	1,324	4,500	4,500	4,500	4,500	4,500	4,500
Gallons of Fuel	29,271	35,500	35,500	35,500	35,500	35,500	35,500
Injuries	0	0	0	0	0	0	0
Collisions	0	0	0	0	0	0	0
Fatalities	0	0	0	0	0	0	0

PARATRANSIT	2019 ACTUAL	2020	2021	2022	2023	2024	2025
One-way trips	853	480	600	700	700	800	800
Operating Expenses	15,688	15,766	15,924	16,083	16,244	16,406	16,570
Vehicle Service Miles	2,418	2,300	2,400	2,450	2,450	2,500	2,500
Vehicle Service Hours	469	360	470	500	500	550	550
Gallons of Fuel	385	300	380	385	385	340	340
Reportable Injuries	0	0	0	0	0	0	0
Collisions	0	0	0	0	0	0	0
Fatalities	0	0	0	0	0	0	0

CABULANCE	2019 ACTUAL	2020	2021	2022	2023	2024	2025
One-way trips	118	120	125	130	135	140	145
Operating Expenses	40,201	41,246	42,246	43,246	44,246	45,246	46,426
Vehicle Service Miles	321	315	325	330	335	340	345

Vehicle Service Hours	223	220	230	235	238	240	242
Gallons of Fuel	58	60	65	70	72	74	76
Reportable Injuries	0	0	0	0	0	0	0
Collisions	0	0	0	0	0	0	0
Fatalities	0	0	0	0	0	0	0

DIAL A RIDE	2019 ACTUAL	2020	2021	2022	2023	2024	2025
One-way trips	10,836	7,500	10,000	10,500	10,500	11,000	11,500
Operating Expenses	81,313	81,313	81,313	81,313	81,313	81,313	81,313
Vehicle Service Miles	82,844	60,000	80,000	81,000	81,000	82,900	83,500
Vehicle Service Hours	5,964	4,150	5,000	5,500	5,500	5,800	6,100
Gallons of Fuel	10,795	10,000	10,200	10,500	10,500	10,700	10,900
Reportable Injuries	0	0	0	0	0	0	0
Collisions	0	0	0	0	0	0	0
Fatalities	0	0	0	0	0	0	0

KITTITAS COUNTY CONNECTOR	2019 ACTUAL	2020	2021	2022	2023	2024	2025
One-way trips	1,835	1,800	1850	1875	1880	1885	1900
Operating Expenses	43,000	43,000	43,000	43,000	43,000	43,000	43,000
Vehicle Service Miles	48,366	48,366	48,366	48,366	48,366	48,366	48,366
Vehicle Service Hours	2,265	2,265	2,265	2,265	2,265	2,265	2,265
Gallons of Fuel	5,490	5,490	5,490	5,490	5,490	5,490	5,490
Reportable Injuries	0	0	0	0	0	0	0
Collisions	0	0	0	0	0	0	0
Fatalities	0	0	0	0	0	0	0

Section 6: OPERATING FINANCIAL PLAN

Operating Revenue

In April of 2016, the City of Ellensburg went to the citizens of Ellensburg with Proposition 1. The proposition authorized collection of a sales and use tax at a

rate of up to 0.2% on all taxable retail sales within the City of Ellensburg for the purpose of paying for or financing the costs of public transportation maintenance, operation and improvements. The proposition was approved with a 63% positive response from the citizens of Ellensburg. The City began receiving these funds in December 2016.

Operating Expenditures

System expenses for 2019 totaled \$ 1,273,859 which includes Fixed Route, ADA Paratransit, Cabulance, Dial A Ride, Kittitas County Connector, the annual funding toward the Yakima-Ellensburg Commuter as well as administrative costs.

Funding Assumptions

- Sales tax revenues from Proposition 1 are expected to be down due to the COVID-19 Pandemic.
- The future inflation rate forecast for the next six years is between 2 – 3 %.
- Central Washington University Students will continue to invest in Central Transit.
- State operating assistance grants are projected to remain near their current levels for Fixed Route and Paratransit operations.
- The outcome of I-976 may play a factor in funding projects.

In order to maintain service levels and to ensure sustainability of the system, a portion of the sale tax revenues is deposited in an operating reserve account. If sales tax income and/or grant funding decrease, the reserves will allow the system to continue to serve the public in the near term without significant performance or service reductions.

It is the intent of the City of Ellensburg through the PTAC to establish a service and growth plan. Future Transit Development Plans will include the vetted service and growth plan information.

Section 7: TRANSIT FINANCES

Exhibit D: 2019 Revenues and Expenses

	2019
Fund 127 - Ellensburg Public Transit thru 12-31-19	Total
100-127-313-21-00-000-000 Retail Sales Tax .02% for PublicTransit	1,199,186
100-127-333-20-00-000-000 WSDOT Grant (Fed Pass Thru) Budget only	41,412
100-127-334-03-60-000-000 WSDOT Consolidated Grant - No Federal Money	382,895
100-127-337-00-00-001-000 WCIA Risk Reduction Grant	7,392
100-127-344-70-00-000-000 Transportation Services	75,000
100-127-344-70-00-001-000 Transit Advertising	0
100-127-361-10-00-000-000 Investment Increase/Decrease for FMV	0
100-127-361-11-00-000-000 Interest Income	34,525
100-127-367-00-00-000-000 Transit - Nongovernmental Grants & Donations	0
100-127-369-90-00-000-000 Transit - Misc Revenue	0
100-127-388-10-00-000-000 Prior Period Adjustment	0
100-127-397-00-00-140-000 Transfer in Sales Tax Support	0
Total Revenues	1,740,410

Fund 127 - Ellensburg Public Transit Expenditures thru 12-31-19	2019 Total
100-127-547-20-10-000-000 Public Transit- Salaries & Wages	94,314
100-127-547-20-20-000-000 Public Transit - Retirement	12,060
100-127-547-20-21-000-000 Public Transit - FICA	7,078
100-127-547-20-22-000-000 Public Transit - L&I	1,555
100-127-547-20-24-000-000 Public Transit - Medical Ins Premiums	18,220
100-127-547-20-26-000-000 Public Transit - Disability Ins Premiums	426
100-127-547-20-27-000-000 Public Transit - Life Ins Premiums	72
100-127-547-20-28-000-000 Public Transit - Paid Medical Leave	152
100-127-547-20-31-000-000 Public Transit - Supplies	6,051
100-127-547-20-35-000-000 Public Transit - Small Tools & Minor Equip	0
100-127-547-20-41-000-000 Public Transit - Professional Services	3,090
100-127-547-20-41-007-000 Upper County Commuter - Professional Services	21,500
100-127-547-20-42-000-000 Public Transit - Communications	2,185
100-127-547-20-43-000-000 Public Transit - Travel	1,667
100-127-547-20-45-000-000 Public Transit - Equipment Rental	1,845
100-127-547-20-46-000-000 Public Transit - Insurance	0
100-127-547-20-49-000-000 Public Transit - Miscellaneous	2,803
100-127-547-20-51-000-000 Public Transit - Intrgovnmntl Services	0
100-127-547-20-91-000-000 Public Transit - Interfund Professional Services	0
100-127-547-20-91-011-104 Public Transit - Interfund General Admin	0
100-127-547-20-91-104-012 Public Transit - Interfund Finance Charges	13,924
100-127-547-20-95-502-550 Public Transit - Interfund Computer Rental	23,724
100-127-547-20-98-000-000 Public Transit - Intrfnd Repairs/Mnt	0
100-127-565-10-51-000-000 Public Transit - Hope Source	0
100-127-594-47-62-000-000 Public Transit - Capital Expnd/Shelters	0
100-127-594-47-63-000-000 Buildings & Structures	0
100-127-594-47-98-000-000 Interfund Capital Expenses	0
100-127-597-95-00-011-000 Administrative Assessment	0
Total Administrative	210,666

100-127-547-20-10-001-000 Fixed Route - Salaries & Wages	0
100-127-547-20-20-001-000 Fixed Route - Retirement	0
100-127-547-20-21-001-000 Fixed Route FICA	0
100-127-547-20-22-001-000 Fixed Route L&I	0
100-127-547-20-24-001-000 Fixed Route Medical Ins	0
100-127-547-20-26-001-000 Fixed Route Disability Ins	0
100-127-547-20-27-001-000 Fixed Route Life Ins	0
100-127-547-20-31-001-000 Fixed Route Supplies	22,764
100-127-547-20-41-001-000 Fixed Route Professional Services	674,484
100-127-547-20-48-001-000 Fixed Route Repairs & Maintenance	0
100-127-547-20-98-001-000 Fixed Route Intrfnd Repairs/Mnt	20,771
100-127-594-47-62-001-000 Fixed Route Capital Exp	0
Total Fixed Route	718,019
100-127-547-20-10-002-000 Expanded Route - Salaries & Wages	0
100-127-547-20-20-002-000 Expanded Route - Retirement	0
100-127-547-20-21-002-000 Expanded Route - FICA	0
100-127-547-20-22-002-000 Expanded Route - L&I	0
100-127-547-20-24-002-000 Expanded Route - Medical Ins	0
100-127-547-20-26-002-000 Expanded Route - Disability Ins	0
100-127-547-20-27-002-000 Expanded Route - Life Ins	0
100-127-547-20-31-002-000 Expanded Route - Supplies	624
100-127-547-20-41-002-000 Expanded Route - Professional Services	165,142
100-127-547-20-45-002-000 Expanded Route - Equipment Rental	355
100-127-547-20-48-002-000 Expanded Route - Repairs & Maintenance	0
100-127-547-20-98-002-000 Expanded Route - Intrfnd Repairs & Mnt	723
100-127-594-47-62-002-000 Expanded Route - Capital Exp	0
100-127-594-47-63-002-000 Expanded Route - Other Improvements	0
Total Expanded Route	166,844

Exhibit E: 2020 – 2025 Projected Revenues and Expenses

Ellensburg Central Transit 2020 – 2025 Projected Revenues and Expenses						
REVENUES:	2020	2021	2022	2023	2024	2025
SALES TAX REVENUE	995,626	1,080,000	1,100,000	1,150,000	1,200,000	1,250,000
WSDOT CONSOLIDATED GRANT 2019-2021	420,750	315,563				
WSDOT CARES GRANT 2020 - 2021	471,380					
WSDOT CONSOLIDATED GRANT 2021-2025 *		115,637	462,550	462,550	462,550	346,911
WSDOT CONSOLIDATED GRANT 2025-2029 *						115,637
WSTIP GRANT	5,000					
SPECIAL NEEDS TRANSPORTATION PARATRANSIT FORMULA FUND	11,174	0	16,000	16,000	16,000	16,000
TRANSPORATION SERVICES (ASCWU)	62,500	75,000	75,000	75,000	75,000	75,000
INTEREST INCOME	24,200	20,000	20,000	20,000	20,000	20,000
TOTAL REVENUE:	1,990,630	1,606,200	1,673,550	1,723,550	1,773,550	1,823,548
EXPENSES:						
FIXED ROUTE	1,023,695	1,044,169	1,065,052	1,086,352	1,108,079	1,130,241
PARATRANSIT	15,766	15,924	16,083	16,244	16,406	16,570
DIAL A RIDE & CITY MATCH	81,313	81,313	81,313	81,313	81,313	81,313
CABULANCE	41,246	42,246	43,246	44,246	45,246	46,246
KITTITAS COUNTY CONNECTOR	43,000	43,000	43,000	43,000	43,000	43,000
YAKIMA ELLENSURG COMMUTER	20,000	20,000	20,000	20,000	20,000	20,000
STAFF, ADVERTISING, MARKETING, CAPITAL, PROFESSIONAL SERVICES & TRAINING	440,450	362,760	400,000	400,000	400,000	400,000
TOTAL EXPENSE	1,665,470	1,609,412	1,668,694	1,691,155	1,714,044	1,737,370
POSSIBLE CONSOLIDATED GRANT AWARD - *						

Section 8: SIX-YEAR TRANSIT IMPROVEMENT PLANS

Priority goals, Objectives, & Strategies for the current year and the Next 5 Years

- Promote economic vitality.
- Maintain, preserve, and improve our transportation system and services.
- Provide and improve the safety and security for passengers and our transportation system.
- Improve and predict the movement of people throughout the city and state with multimodal connections and accessible modes of transportation.
- Enhance the quality of life through investments which promote energy conservation, enhance healthy communities, and protect the environment.
- Continue to improve the quality and efficiency of our transportation system.

2020 – 2025 Local Operating Projects

- Travel Training.
- Increase safety measures to ensure the safety of operators and passengers.
- Evaluate routes and add time stops resulting in a more reliable and user-friendly service.
- Continue to monitor and analyze routes and services for efficiency and reliability.
- Continue to participate in multimodal transit projects such as bike lanes, pedestrian and bike trails.
- Community outreach.
- Develop a Commute Trip Reduction plan for major employers within the City of Ellensburg.
- Continue to participate and expand services to support the States Connecting Washington Transit Project.
- Update Transit website.
- Use the Transit app for real-time public transit data.
- Continue to update transit flyers and pamphlets.
- Move to a bus book.

- Provide community shuttles for events like the Ellensburg Rodeo.
- Participate in Summer Youth Activities.
- Work closely with Contractor to ensure services are safe and reliable.
- Increased transit branding and recognition with Central Transit uniforms and safety vests.
- Increased social media presence.

2020 – 2025 Local Capital Projects

- Additional ADA bus stop enhancements.
- Additional bus shelters.
- ADA accessible sidewalks and curb cuts.
- Additional bus turnouts.
- Bus stop improvements.
- Safety improvements.
- Low or zero emissions/electric buses.
- Multimodal Transit Station.
- Bike lanes.
- Pedestrian, bike and equestrian trails.

Ellensburg Central Transit Proposed Capital Improvements

It is the City of Ellensburg's intent to maintain the Ellensburg Central Transit system as a fully contracted (turnkey) operation. The contractor will continue to provide all equipment, facilities, personnel and maintenance; therefore, no vehicles, facility maintenance or related projects are budgeted by or for Ellensburg Central Transit.

We will continue to work with our regional planning organization to address transit needs in our community and county.

The goals in system changes and improvements through 2025 are:

2020

- Add 8 new bus shelters, including bike racks, solar lighting, trash cans, signs and concrete.
- Construct 4 bus pullouts
- Mobilizations (Fixed)
- Bus Stop Improvements
- Driver safety barriers for 8 buses

2021

- Cost differential for 2 low or zero emissions for 2 fixed route buses
- Maintain & improve ADA amenities within the transit system
- 2 additional bus stop pullouts

2022

- Cost differential for 3 low or zero emissions/electric fixed route buses.
- Maintain & improve ADA amenities within the transit system
- Bus stop improvements
- 2 additional bus stop pullouts
- Multimodal Transit Station contribution

2023

- Maintain & improve ADA amenities within the transit system
- 2 additional bus stop pullouts
- Bus stop improvements
- Cost differential for 2 low or zero emissions/electric fixed route buses

2024

- Cost differential for 2 low or zero emissions/electric fixed route buses

- Maintain & improve ADA amenities within the transit system
- Bus stop improvements

2025

- Maintain & improve ADA amenities within the transit system
- Bus stop improvements
- Cost differential for 2 low or zero emissions/electric fixed route buses

Funds will be allocated to these projects when needed.

*These system changes and improvements noted are subject to change pending inputs from finance, PTAC and the City Council.

Section 9: SUMMARY

2019 was a very successful year for Ellensburg Central Transit.

We are committed to preserving and strengthening our community and will continue to provide transportation services and mobility options for those who need them.

Exhibit F: Current System Maps

Full Service Map - English

CENTRAL TRANSIT FEATURES

- Easy to ride
- Equipped with bike racks
- Wheelchair accessible
- Five routes available
- Service 7 days/week
- Route planner via Google Maps
- Bus locator using RouteShout2 app

FIXED ROUTE SERVICE HOURS

Route 12
7:00 AM - 8:00 PM
Routes 13, 14
7:00 AM - 7:00 PM
Routes 15, 16
7:30 AM - 7:00 PM

HOLIDAYS

Buses DO NOT provide transit service on the following days:
New Year's Day 4th of July
President's Day Thanksgiving Day
Memorial Day Christmas Day

CONTACT US

Phone: (509) 933-2287 M-F 8A-4P
Online: <https://ci.ellensburg.wa.us/centraltransit>
Social Media: Facebook/centraltransit



Ellensburg Central Transit

Timetables and Routes
Published Nov 2019



Fare-FREE for all riders
Another reliable City of Ellensburg service



Full Service Map – Spanish

CARACTERÍSTICAS DE CENTRAL TRANSIT

- Fácil de usar
- Equipado con portabicicletas
- Accesibilidad para sillas de ruedas
- Cinco rutas disponibles
- Servicio los 7 días de la semana
- Planificador de rutas a través de Google Maps
- Localizador de autobuses con la aplicación RouteShout2

HORARIOS DEL SERVICIO DE RUTA FIJA

Ruta 12: de 7 a. m. a 8 p. m.
Rutas 13, 14: de 7 a. m. a 7 p. m.
Rutas 15, 16: de 7.30 a. m. a 7 p. m.

FERIADOS

Los autobuses NO prestan servicio de transporte público los siguientes días:
Año Nuevo, 4 de julio, Día de los Presidentes, Día de Acción de Gracias, Día de la Conmemoración de los Caídos
Navidad

CONTÁCTENOS

Phone: (509) 933-2287 M-F 8A-4P
Online: <https://ci.ellensburg.wa.us/centraltransit>
Social Media: Facebook/centraltransit

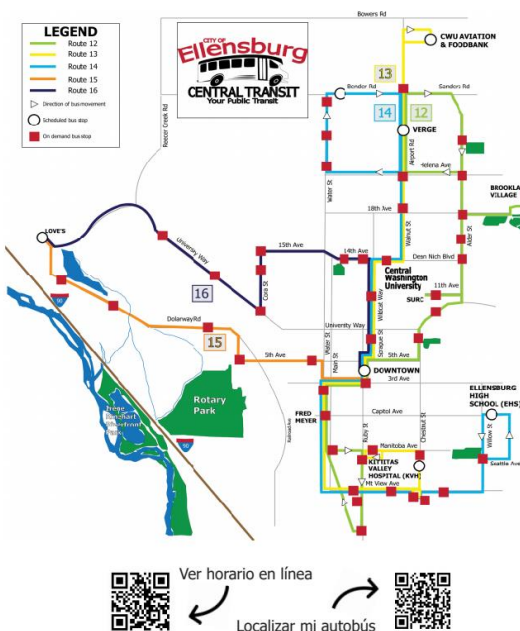


Ellensburg Central Transit

Horarios y rutas publicadas en nov. de 2019



Servicio GRATUITO
para todos los pasajeros
Otro servicio confiable de la ciudad de Ellensburg



Central Transit Routes 12 A and 12 B

ROUTE 12 SB to Ruby & Manitoba						ROUTE 12 NB to Airport & Greenfield					
Airport & Greenfield (Verge)	E 11th & N Maple (SARC)	Chestnut & E. 6th	Depart Ruby & 4th (Downtown)	Water & Capital (Fred Meyer)	Ruby & Manitoba (AAC)		Water & Capital (Fred Meyer)	Depart Ruby & 4th (Downtown)	E 11th & N Maple (SARC)	Airport & Greenfield (Verge)	Route 12 A or Route 12 B
								7:10	7:17	7:24	12 A
7:24	7:42	7:45	7:54	7:57	8:00		8:04	7:40	7:47	7:54	12 B
7:54	8:12	8:15	8:24	8:27	8:30		8:34	8:10	8:17	8:24	12 A
8:24	8:42	8:45	8:54	8:57	9:00		9:04	8:40	8:47	8:54	12 B
8:54	9:12	9:15	9:24	9:27	9:30		9:34	9:10	9:17	9:24	12 A
9:24	9:42	9:45	9:54	9:57	10:00		10:04	9:40	9:47	9:54	12 B
9:54	10:12	10:15	10:24	10:27	10:30		10:34	10:10	10:17	10:24	12 A
10:24	10:42	10:45	10:54	10:57	11:00		11:04	10:40	10:47	10:54	12 B
10:54	11:12	11:15	11:24	11:27	11:30		11:34	11:10	11:17	11:24	12 A
11:24	11:42	11:45	11:54	11:57	12:00		12:04	11:40	11:47	11:54	12 B
11:54	12:12	12:15	12:24	12:27	12:30		12:34	12:10	12:17	12:24	12 A
12:24	12:42	12:45	12:54	12:57	1:00		1:04	12:40	12:47	12:54	12 B
12:54	1:12	1:15	1:24	1:27	1:30		1:34	1:10	1:17	1:24	12 A
1:24	1:42	1:45	1:54	1:57	2:00		2:04	1:40	1:47	1:54	12 B
1:54	2:12	2:15	2:24	2:27	2:30		2:34	2:10	2:17	2:24	12 A
2:24	2:42	2:45	2:54	2:57	3:00		3:04	2:40	2:47	2:54	12 B
2:54	3:12	3:15	3:24	3:27	3:30		3:34	3:10	3:17	3:24	12 A
3:24	3:42	3:45	3:54	3:57	4:00		4:04	3:40	3:47	3:54	12 B
3:54	4:12	4:15	4:24	4:27	4:30		4:34	4:10	4:17	4:24	12 A
4:24	4:42	4:45	4:54	4:57	5:00		5:04	4:40	4:47	4:54	12 B
4:54	5:12	5:15	5:24	5:27	5:30		5:34	5:10	5:17	5:24	12 A
5:24	5:42	5:45	5:54	5:57	6:00		6:04	5:40	5:47	5:54	12 B
5:54	6:12	6:15	6:24	6:27	6:30		6:34	6:10	6:17	6:24	12 A
6:24	6:42	6:45	6:54	6:57	7:00		7:04	6:40	6:47	6:54	12 B
6:54	7:12	7:15	7:24	7:27	7:30		7:34	7:10	7:17	7:24	12 A
7:24	7:42	7:45						7:40	7:47	7:54	12 B
7:54	8:12	8:15									12 A



Central Transit Route 13

ROUTE 13 SB to Chestnut & Seattle						ROUTE 13 NB to Beech & Elmview					
Beech & Elmview (Bowers Field Airport)	E Dean Nic & Walnut (Brooks Library)	Depart Ruby & 4th (Downtown)	Water & Capitol (Fred Meyer)	E Mt View & Pine (Super 1)	E Mt View & Chestnut (Briarwood)	Chestnut & Seattle (KVH)	E Mt View & Pine (Super 1)	Water & Capitol (Fred Meyer)	Depart Ruby & 4th (Downtown)	E Dean Nic & Walnut (Brooks Library)	Beech & Elmview (Bowers Field Airport)
7:05	7:10	7:25	7:29	7:34	7:37	7:44	7:48	7:52	7:57	8:01	8:05
8:05	8:10	8:25	8:29	8:34	8:37	8:44	8:48	8:52	8:57	9:01	9:05
9:05	9:10	9:25	9:29	9:34	9:37	9:44	9:48	9:52	9:57	10:01	10:05
10:05	10:10	10:25	10:29	10:34	10:37	10:44	10:48	10:52	10:57	11:01	11:05
11:05	11:10	11:25	11:29	11:34	11:37	11:44	11:48	11:52	11:57	12:01	12:05
12:05	12:10	12:25	12:29	12:34	12:37	12:44	12:48	12:52	12:57	1:01	1:05
1:05	1:10	1:25	1:29	1:34	1:37	1:44	1:48	1:52	1:57	2:01	2:05
2:05	2:10	2:25	2:29	2:34	2:37	2:44	2:48	2:52	2:57	3:01	3:05
3:05	3:10	3:25	3:29	3:34	3:37	3:44	3:48	3:52	3:57	4:01	4:05
4:05	4:10	4:25	4:29	4:34	4:37	4:44	4:48	4:52	4:57	5:01	5:05
5:05	5:10	5:25	5:29	5:34	5:37	5:44	5:48	5:52	5:57	6:01	6:05
6:05	6:10	6:25	6:29	6:34	6:37	6:44	6:48	6:52	6:57	7:01	7:05
7:05	7:10										



Central Transit Route 14

ROUTE 14 SB to Capitol & Willow						ROUTE 14 NB to Bender & Ellington					
Bender & Ellington	E Dean Nic & Wildcat Wy (Brooks Library)	Depart Ruby & 4th (Downtown)	Water & Capitol (Fred Meyer)	E Mt View & Pine (Super 1)	E Mt View & Chestnut (Brainwood)	Capitol & Willow (EHS)	E Mt View & Pine (Super 1)	Water & Capitol (Fred Meyer)	Depart Ruby & 4th (Downtown)	E Dean Nic & Wildcat Wy (Brooks Library)	Bender & Ellington
7:37	7:42	6:55	6:59	7:03	7:07	7:11	7:19	7:23	7:27	7:32	7:37
8:37	8:42	7:55	7:59	8:03	8:07	8:11	8:19	8:23	8:27	8:32	8:37
9:37	9:42	8:55	8:59	9:03	9:07	9:11	9:19	9:23	9:27	9:32	9:37
10:37	10:42	9:55	9:59	10:03	10:07	10:11	10:19	10:23	10:27	10:32	10:37
11:37	11:42	10:55	10:59	11:03	11:07	11:11	11:19	11:23	11:27	11:32	11:37
12:37	12:42	11:55	11:59	12:03	12:07	12:11	12:19	12:23	12:27	12:32	12:37
1:37	1:42	1:03	1:07	1:11	1:15	1:19	1:23	1:27	1:32	1:37	1:37
2:37	2:42	2:03	2:07	2:11	2:15	2:19	2:23	2:27	2:32	2:37	2:37
3:37	3:42	3:03	3:07	3:11	3:15	3:19	3:23	3:27	3:32	3:37	3:37
4:37	4:42	4:03	4:07	4:11	4:15	4:19	4:23	4:27	4:32	4:37	4:37
5:37	5:42	5:03	5:07	5:11	5:15	5:19	5:23	5:27	5:32	5:37	5:37
6:37	6:42	6:03	6:07	6:11	6:15	6:19	6:23	6:27	6:32	6:37	6:37



Central Transit Route 15

ROUTE 15 E/W to I-90 VIA DOLARWAY				
Depart Ruby & 4th (Downtown)	5th & Pacific	I-90 West Interchange (Love's)	5th & N. Pacific	Arrive Ruby & 4th (Downtown)
7:58	8:03	8:11	8:19	8:21
8:58	9:03	9:11	9:19	9:21
9:58	10:03	10:11	10:19	10:21
10:58	11:03	11:11	11:19	11:21
11:58	12:03	12:11	12:19	12:21
12:58	1:03	1:11	1:19	1:21
1:58	2:03	2:11	2:19	2:21
2:58	3:03	3:11	3:19	3:21
3:58	4:03	4:11	4:19	4:21
4:58	5:03	5:11	5:19	5:21
5:58	6:03	6:11	6:19	6:21
6:58	7:03	7:11	7:19	7:21



Exhibit G: Transit Development Plan adopted by the City of Ellensburg
and attested to by City Clerk

1

Ellensburg Central Transit Transit Development Plan

Annual Report for 2019
and
Six-Year Plan for 2020 – 2025



Public Hearing Date: September 8 , 2020

Adopted by the City of Ellensburg City Council: September 8, 2020

Attested to:

Beth Seader



Ellensburg Central Transit's 2019 Annual Transit Report & Transit Development Plan 2020 - 2025